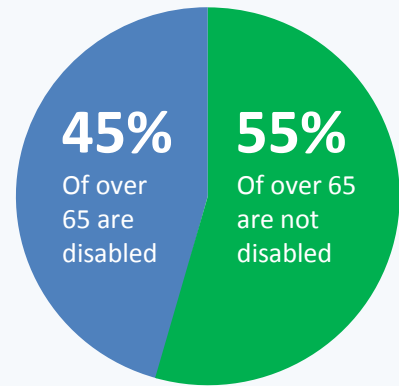


DISABILITY IN THE UK

KEY STATISTICS

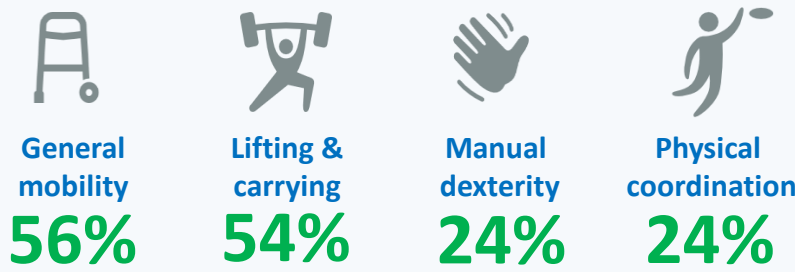
1 in 5 PEOPLE

HAVE A DISABILITY



8.96 million people have a mobility impairment

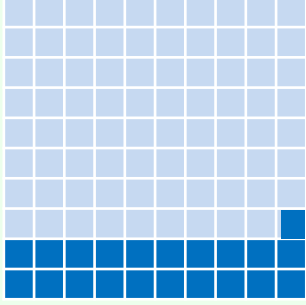
MOST COMMON IMPAIRMENTS



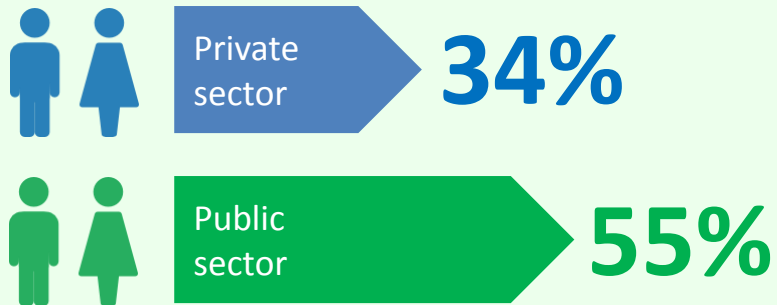
Born without
ONLY 17%
Born with
THEIR DISABILITY

EDUCATION


Working population (16 – 64 years old)



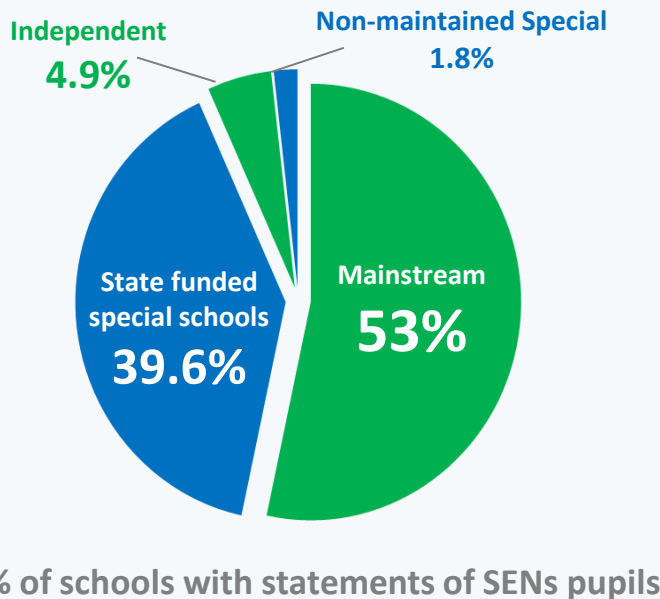
20.8% (8.3 million) have a disability



% think their workplace welcomes disabled people

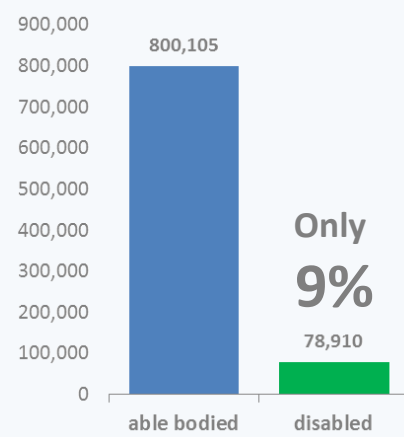
Over **1/3** of disabled people who are not in work would like to work 

EMPLOYMENT



% of schools with statements of SENs pupils

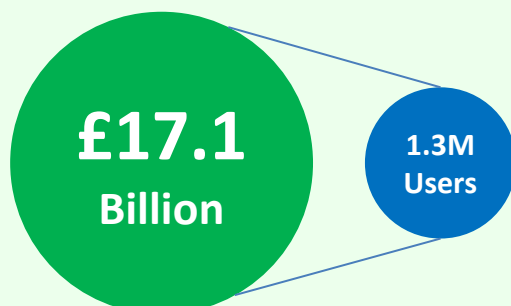
No. of disabled students who entered higher education



ACCESSIBILITY

1/3 of NHS users are disabled people

Local authority spend on adult social services



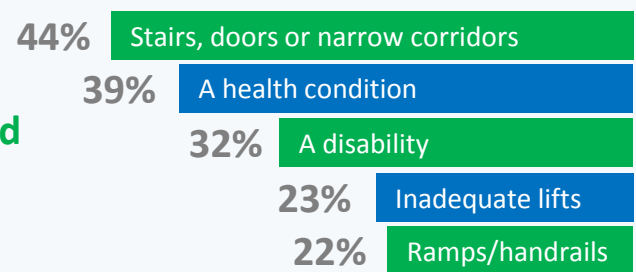
Only 8% of disabled people



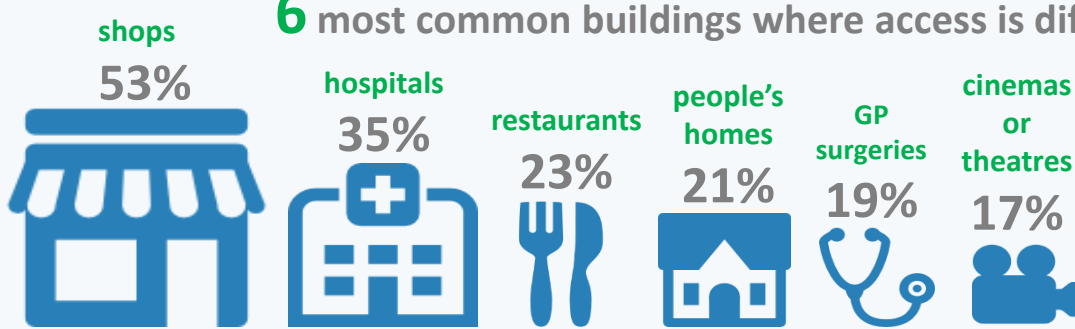
SOCIAL HEALTH AND CARE

29% of adults have found some buildings inaccessible

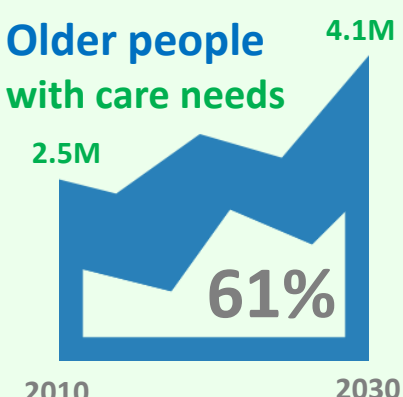
Common barriers for adults with impairments



6 most common buildings where access is difficult



FUTURE



2022
40% Increase in older disabled people

In 30 years, the number of people living with dementia will double to 1.4 million

FUTURE

Sources:
 Papworth Trust Disability in the United Kingdom 2013 Facts & Figures:
 Family resource Survey 2011/12
 Institute for Public Policy Research article Work for Disabled People: [http://www.ippr.org/uploadedFiles/research/projects/Social_Policy/Work%20for%20disabled%20-%20Archilles\(1\).pdf](http://www.ippr.org/uploadedFiles/research/projects/Social_Policy/Work%20for%20disabled%20-%20Archilles(1).pdf)
 Northamptonshire County Council, Employment and disability services
 National Transport Survey 2006
 Family Resources Survey 2011/12: https://www.gov.uk/government/uploads/attachment_data/file/206887/frs_2011_12_report.pdf
 The Annual Population Survey March 2013 retrieved from NOMIS: www.nomisweb.co.uk
 Multiple Sclerosis Society Survey (undertaken March 2012), p.9 <http://www.mssociety.org.uk/sites/default/files/Fighting%20Back%20-%20MS%20Week%202012%20report%20-%20spreads.pdf>
 Labour Force Survey, Quarter 2, 2010 and Quarter 2, 2011
 ODI Life Opportunities Survey, Wave One 2009/11
 HESA statistics: http://www.hesa.ac.uk/index.php?option=com_content&task=view&id=1897&Itemid=239
 Special Educational Needs in England, January 2013: https://www.gov.uk/government/uploads/attachment_data/file/225699/SFR30-2013_Text.pdf
 Office for Disability Issues: <http://www.officefordisability.gov.uk/docs/wor/imp/accessible-information.pdf>
 Personal Social Service Expenditure and Unit Cost 2012/13 Provisional release. NHS information centre
 And a big thanks to Icons8 for the icons <http://icons8.com>